

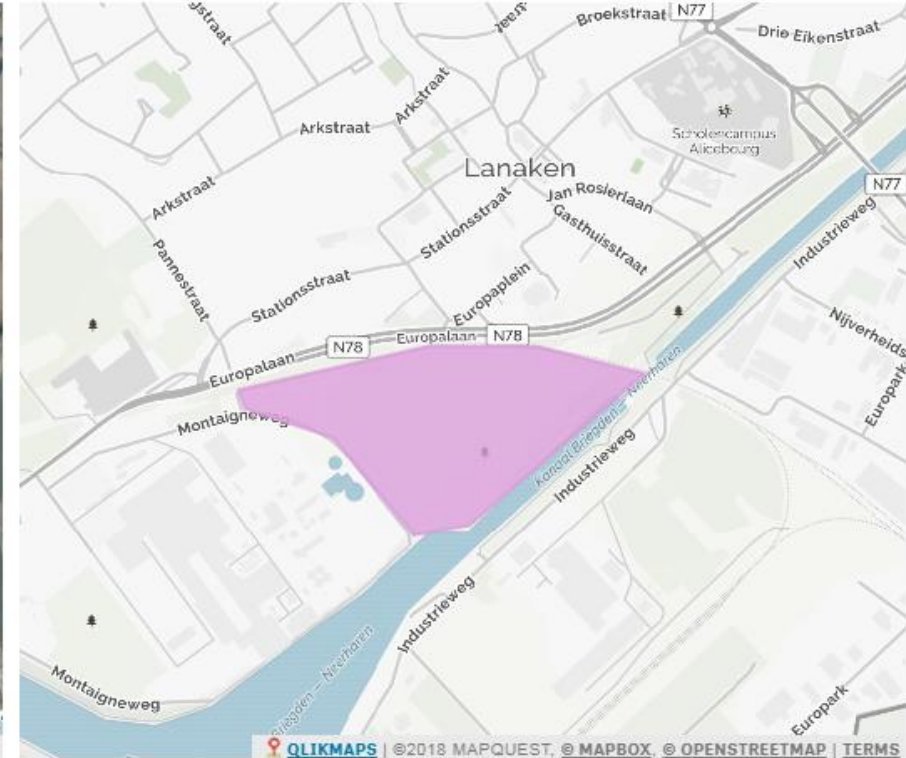
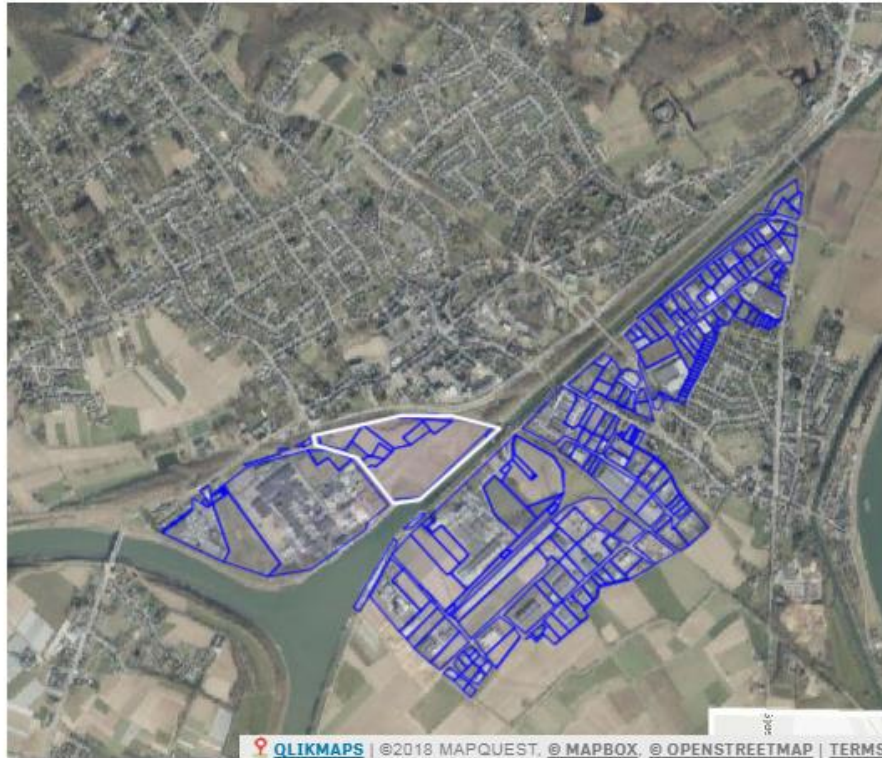
Lanaken

bedrijven

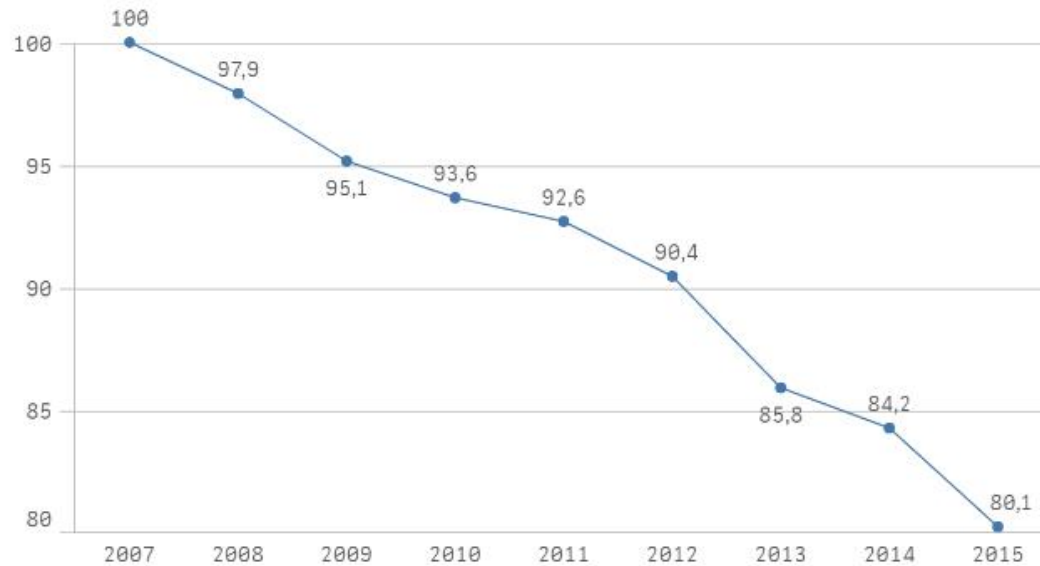
155

Oppervlakte (ha)

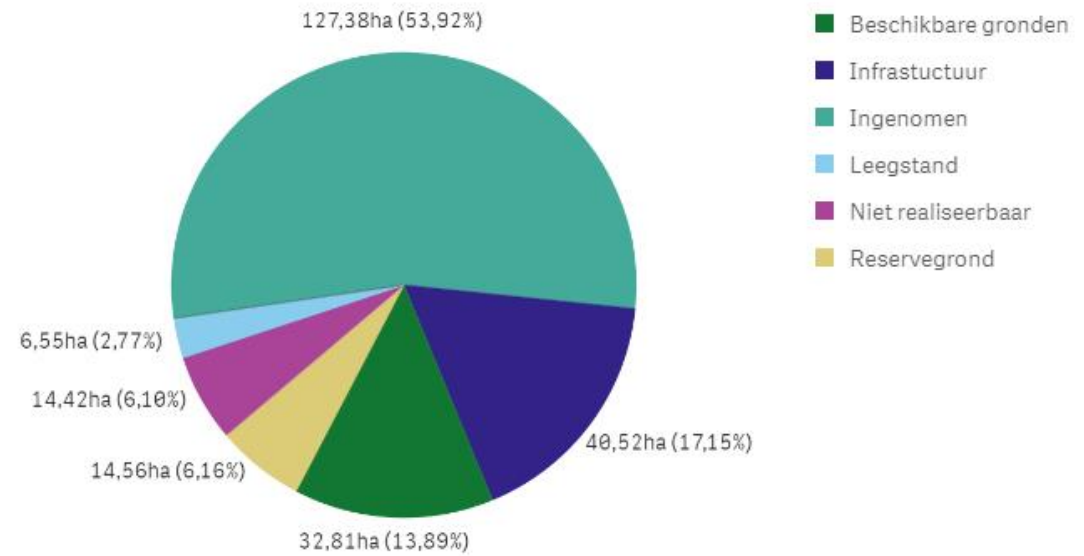
236,2



Relatieve evolutie tewerkstelling t.o.v. basisjaar 2007

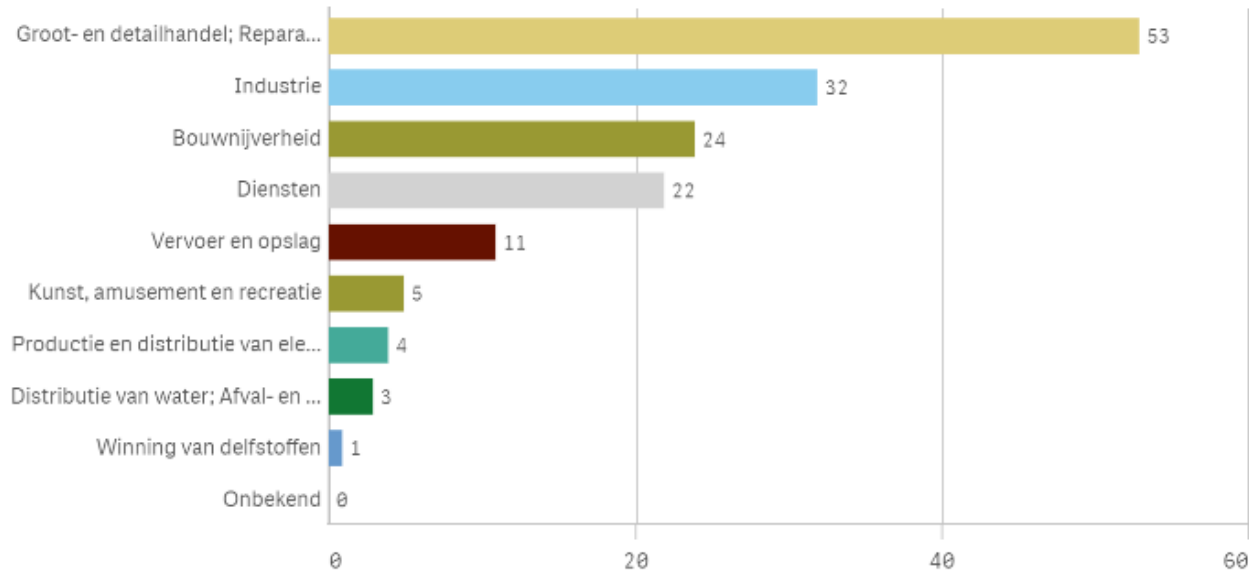


Invulling terrein

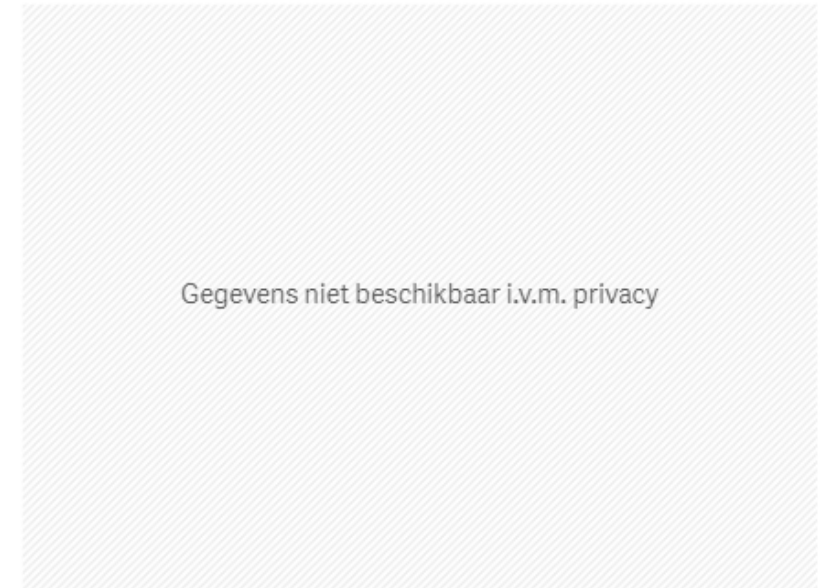


Lanaken

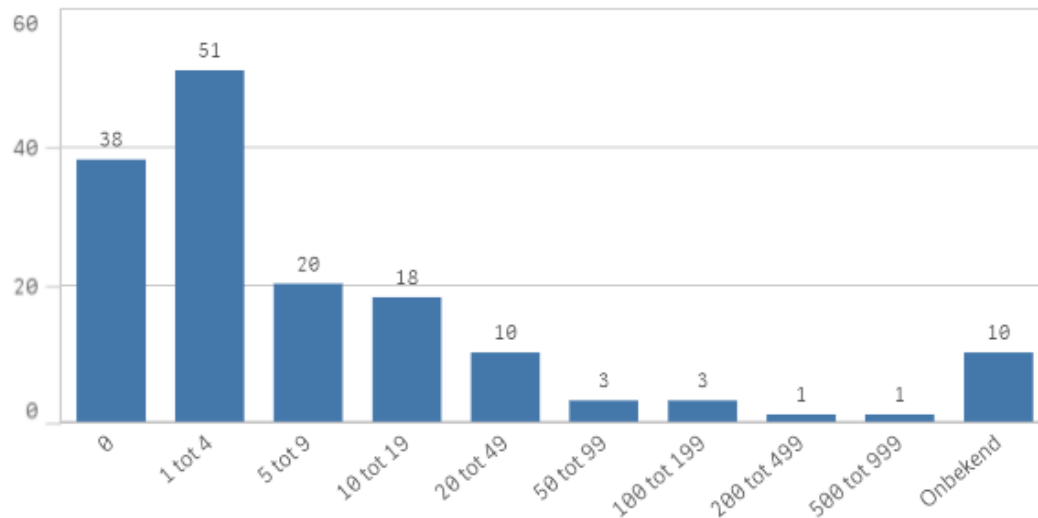
Aantal bedrijven per bedrijfsactiviteit



Watergebonden overslag in ton (De Vlaamse Waterweg)



Aantal bedrijven per werknemersklasse



Oppervlakteklasse percelen

